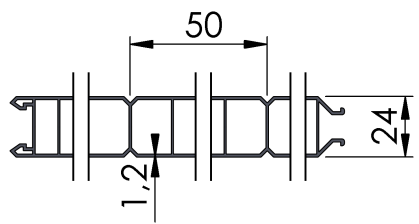
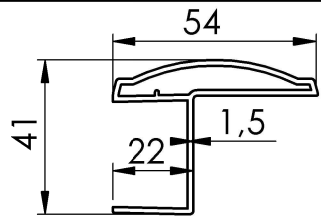


N°	DESIGNATION
1	Lame PVC
2	Profil U PVC
3	Profil couvre-joint PVC
4	Profil barre PVC 80x24 mm
5	Clip PVC (Barres et écharpes)
6	Embout de barre PVC
7	Vis de fixation de la barre
8	Ecrou borgne composite M6
9	Profil écharpe PVC
10	Penture aluminium ép. 4 mm / cambrage 3
11	Gonds chimique composite lg:90 + tamis pvc
12	Vis TRCC aluminium M6
13	Arrêt de vent composite (Marseillais)
14	Butée composite
15	Tube d'espagnolette aluminium
16	Poignée d'espagnolette composite
17	Lacet d'espagnolette
18	Vis deC4 fixation du support
19	Embout d'espagnolette composite
20	Contre-penture aluminium 3 mm
21	Support d'espagnolette composite
22	Vis de fixation du support d'espagnolette
23	Renfort pvc
24	Renfort acier



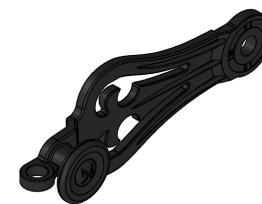
Lame PVC VB 24 mm (1)



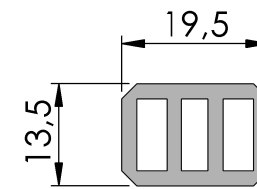
Profil couvre-joint PVC 54x42 (3) VB 28 mm



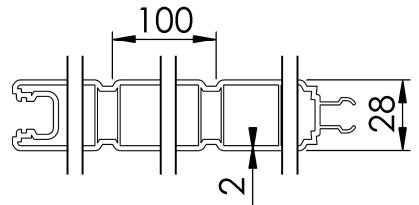
Penture aluminium ép. 4mm (10)



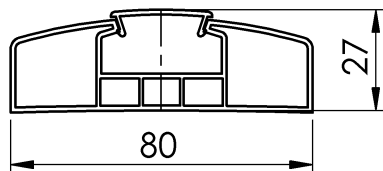
Poignée d'espagnolette composite (16)



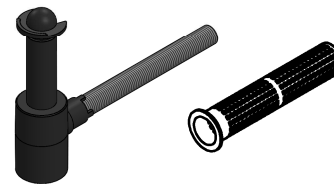
Renfort pvc VB 24 mm (23)



Lame PVC VB 28 mm (1)



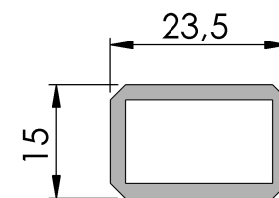
Profil barre PVC(4) + Clip (5)



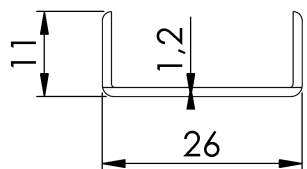
Gonds chimique composite lg:90 + tamis PVC (11)



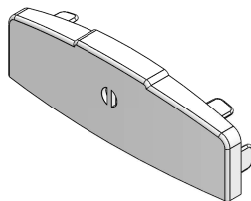
Lacet d'espagnolette composite (17)



Renfort pvc VB 28 mm (23)



Profil U PVC 26x11 (2) VB 24 mm



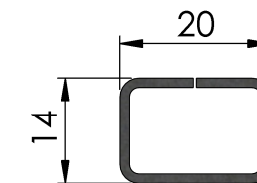
Embout de barre PVC (6)



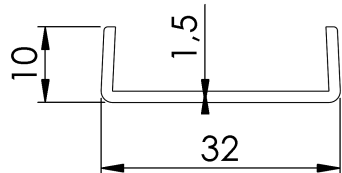
Arrêt de vent composite noir (13)



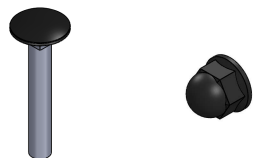
Embout d'espagnolette composite (19)



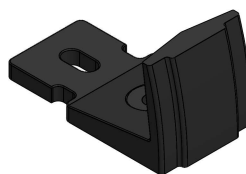
Renfort acier VB 24 mm (24)



Profil U PVC 31x12 (2) VB 28 mm



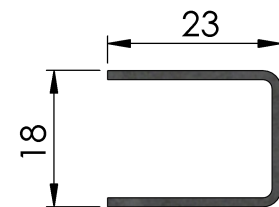
Vis TRCC aluminium (12) + Ecrou borgne composite (8)



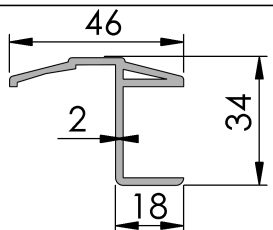
Butée composite(14)



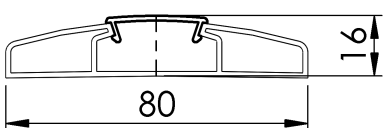
Contre-penture aluminium(20)



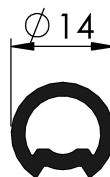
Renfort acier VB 28 mm (24)



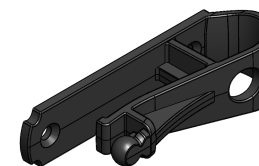
Profil couvre-joint PVC 46x34 (3)VB 24 mm



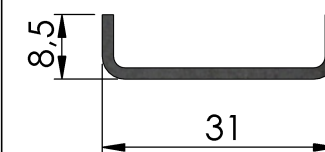
Profil écharpe PVC (9) + clip (5)



Tube d'espagnolette (15)



Support d'espagnolette composite(21)



Renfort barre acier